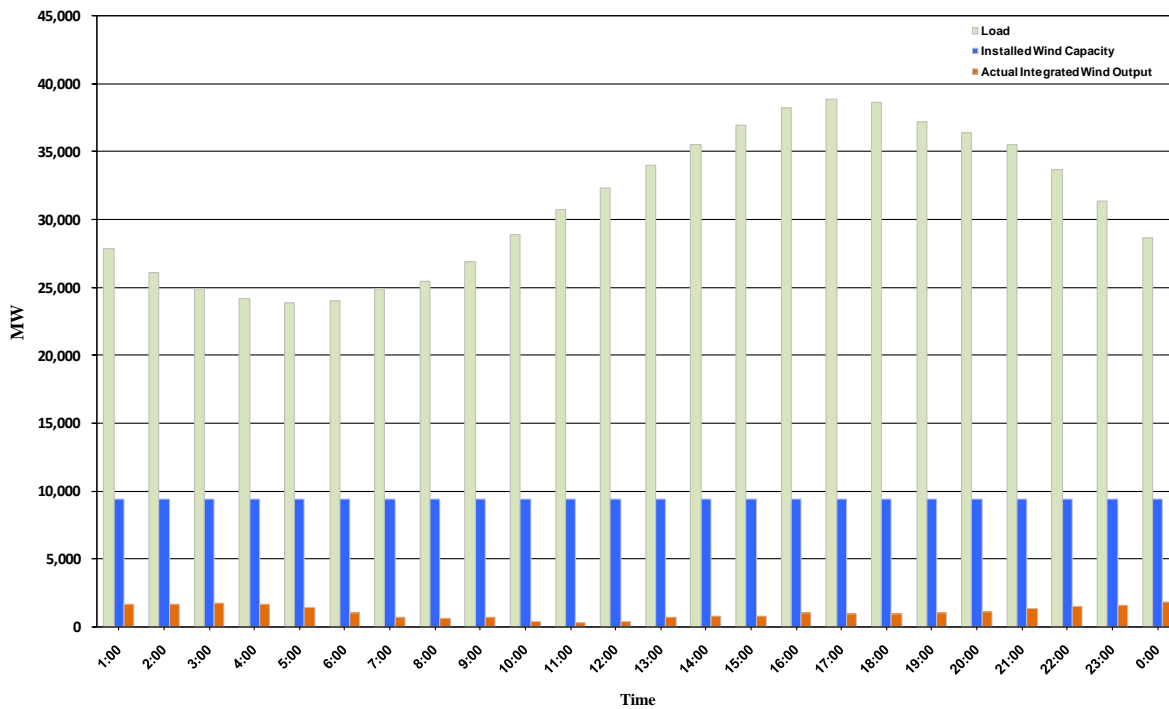




ERCOT Grid Operations Wind Integration Report: 10/02/10

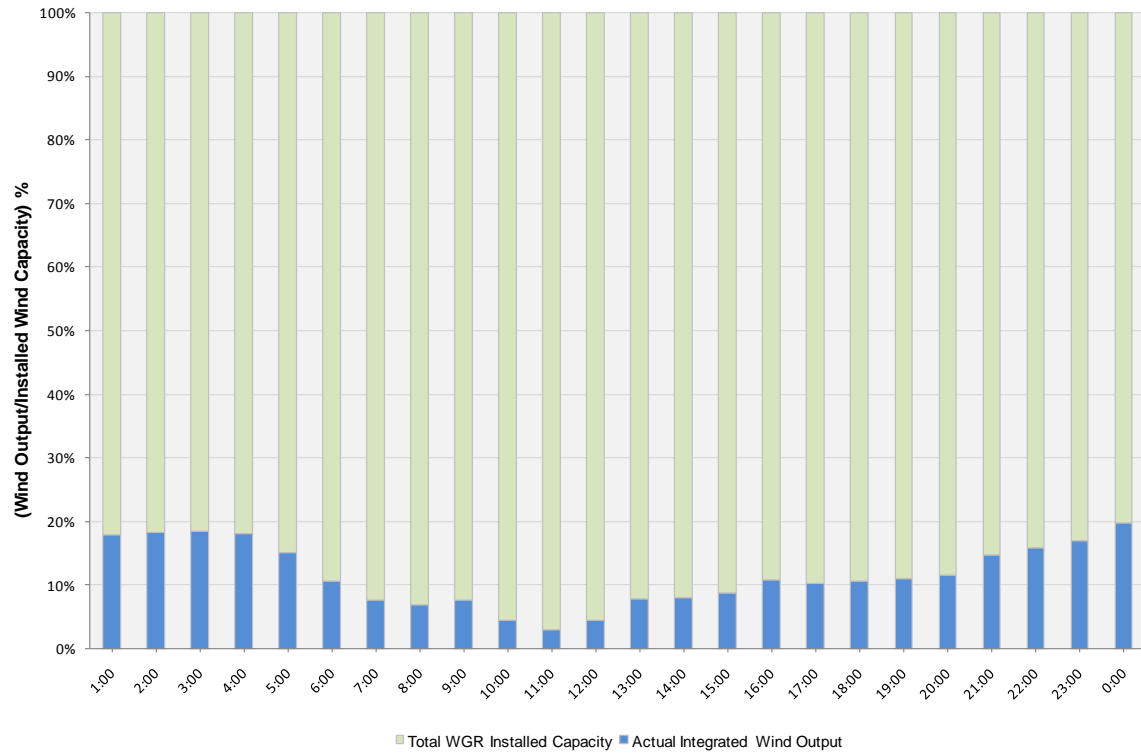
Peak Load	38,888 MW
Load Peak Hour	17
Wind Record 06/12/10	7016 MW
Max Wind value	2443 MW
Wind Peak Hour	23:59:44
Wind Penetration %	8.92

Hourly Average Actual Load vs. Actual Wind Output
10-02-2010

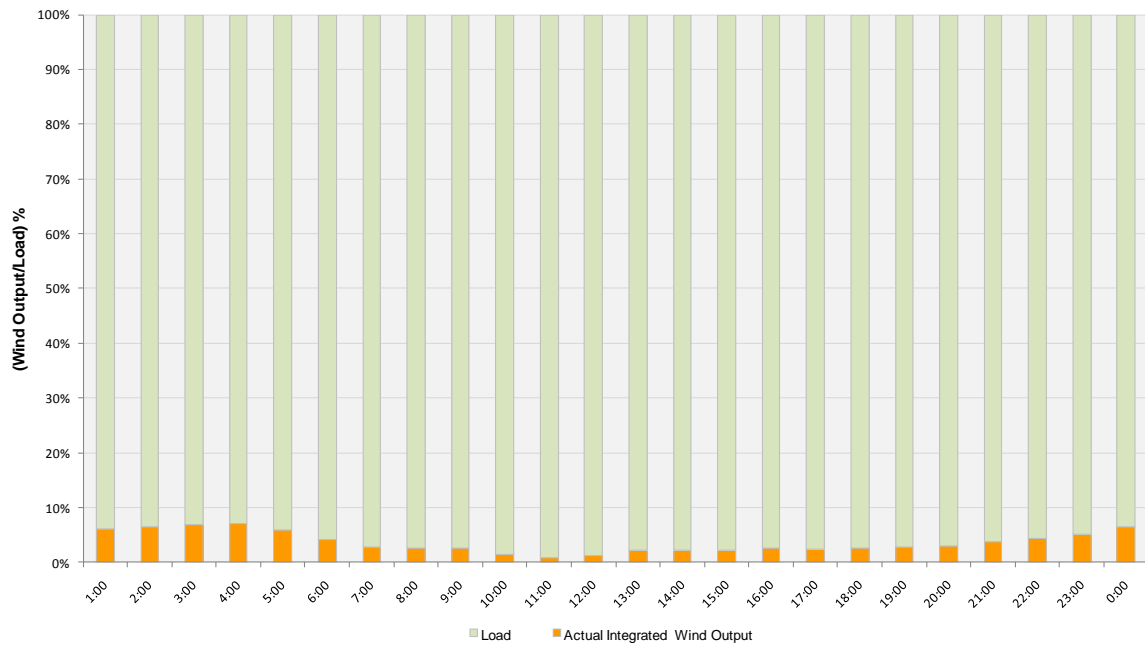




Actual Wind Output as a Percentage of the Total Installed Wind Capacity
10-02-2010



Actual Wind Output as a Percentage of the ERCOT Load
10-02-2010





ERCOT Load vs. Actual Wind Output 09/25/10 - 10/02/10

